

Alaska Department of Fish and Game

Habitat Section
Southeast Region



114-31-10090-2031 Tributary 3

ADDITION

Water body name:

Survey date: 7/11/2022; 7/22/2022

Quad: Juneau A-5

Species & Lifestage:

Upper Reach Latitude: 58.088036 **Longitude:** -135.346892

Survey crew: FC, RR

Lower Reach Latitude: 58.087618 **Longitude:** -135.346496

Findings: We surveyed this uncataloged stream using a backpack electrofisher and GPS. We captured juvenile coho salmon and Dolly Varden. The tributary stream has small subterranean braids upstream and flows down a low-gradient hillside (Table 1; Figures 1, 2).

Recommendations: Add this uncataloged stream to the anadromous waters catalog for rearing coho salmon (Figure 3).

Nomination: Pending

Table 1.—114-31-10090-2031 tributary 3 survey data.

Waypoint	Latitude	Longitude	Notes	Stream Width ft	Stream Substrate	Habitat Features	Gradient %	Sample Effort	Sample Results
1006	58.087751	-135.346486	Tributary on river-right.						
1216	58.087615	-135.346498		2-4	Fine Organic	Cut Banks	2-4	EF	2 CO 1 DV
1217	58.088041	-135.346915	Stream becoming smaller, more incised with cut banks, with slight gradient increases. Vegetation is growing over the stream.	1-2	Fine Organic	Incised Channel Cut Banks	2-4	EF	2 CO
1218	58.088552	-135.347329	Stream begins having small braids and going subsurface, difficult to locate. Ending survey here, may recommend future investigation with minnow traps.					EF	No Fish



Figure 1.—Juvenile coho salmon captured at waypoint 1216.



Figure 2.—Tributary 3 at waypoint 1216.

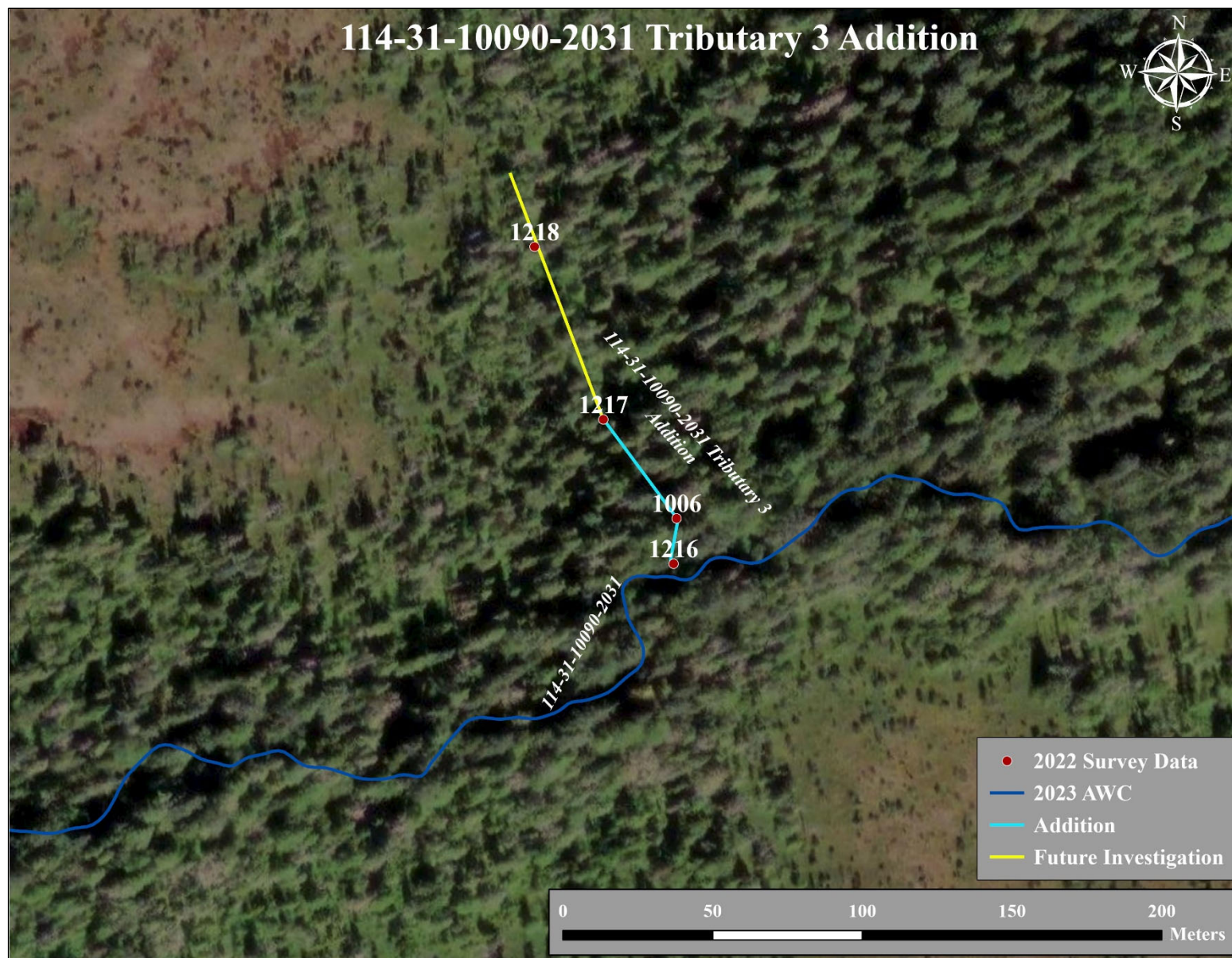


Figure 3.–114-31-10090-2031 tributary 3 addition map.